

PART OF THE N.W. 1/4 OF SECTION 29, T.7N., R.1W., S.L.B. & M.

TAYLOR ESTATES PLAT I

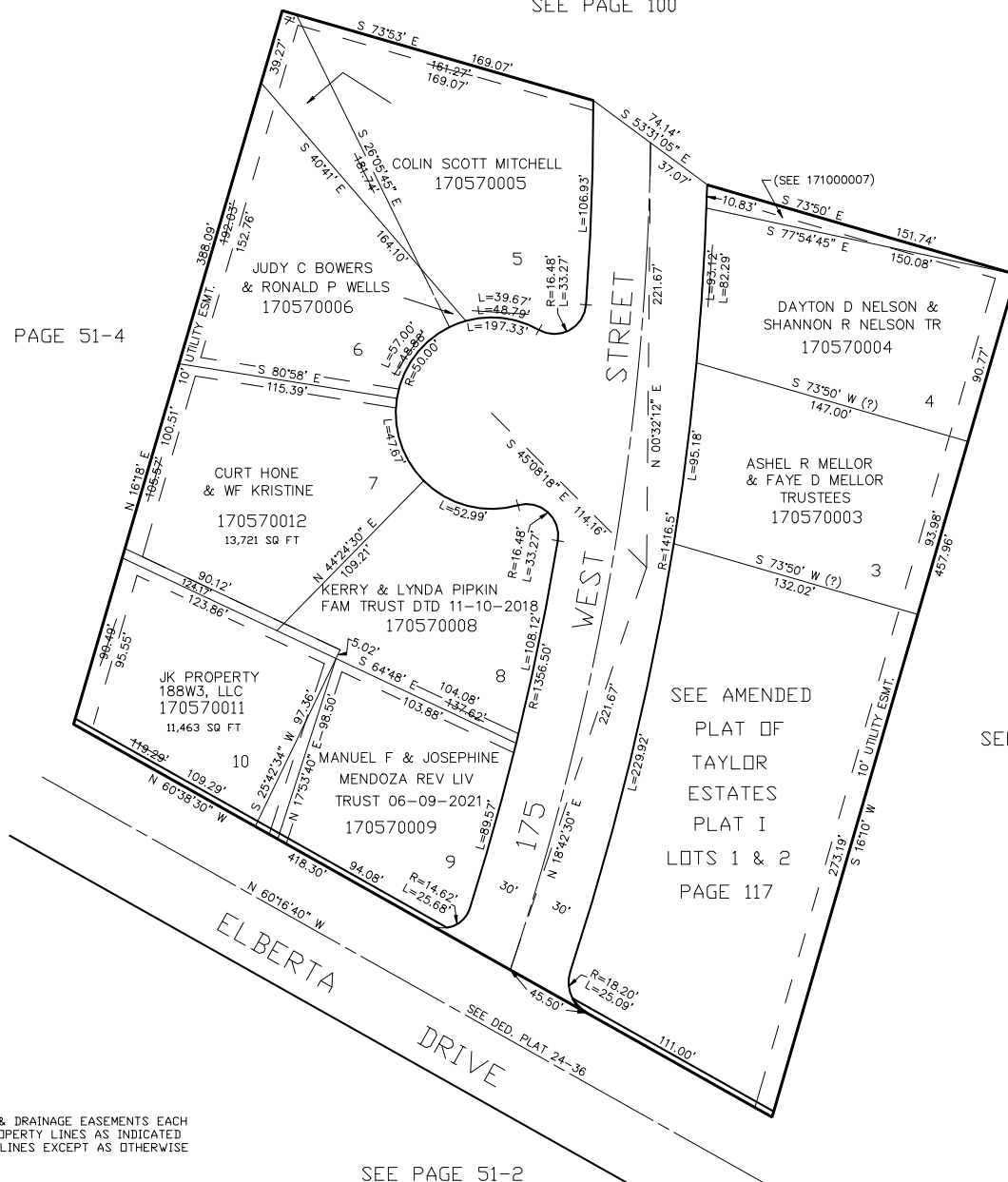
IN NORTH OGDEN CITY

TAXING UNIT: 10

SCALE 1" = 50'

SEE PAGE 100

SEE PAGE 51-4



FOR TAX PURPOSES ONLY